



User Manual

# EXPLORER

*Think It. Build It.*



# Product Video Information



**EXPLORER Product Video**



**EXPLORER Assemble Guide Video**



**EXPLORER Installation Guide Video**

# Product Story

## Build Your PC from the Outside In

The EXPLORER gaming chassis offers you the chance to build your own PC case! Assemble the 10-piece modular structure of EXPLORER to complete the mini tower. Nice DIY project for yourself or build the chassis with friends or family!



# Specifications



## InWin EXPLORER Chassis

<b>Model</b>	EXPLORER
<b>Model Number</b>	IW-CS- EXPLORER-JWHI, IW-CS- EXPLORER-BWHI
<b>Colors</b>	Justice White, Bone White
<b>Case Type</b>	Mini-ITX Tower
<b>Materials</b>	Tempered Glass, SECC, ABS
<b>M/B Compatibility</b>	Mini-ITX
<b>Expansion Slots</b>	3 x Vertical PCI-E
<b>Maximum Compatibility</b>	VGA Card Length: 330mm CPU Heatsink Height: 160mm
<b>I/O Ports</b>	1 x USB 3.1 Gen 2 Type-C 2 x USB 3.0 HD Audio
<b>Internal Drive Bays</b>	2 x 2.5" / 1 x 3.5"
<b>Thermal Solution Compatibility</b>	Air Cooling Fans: Top: 2 x 120 / 2 x 140mm Rear: 1 x 120 / 140mm (3 InWin AL120 Fans Included)  Water Cooling Radiator: Top: 1 x 240mm
* Number of fans pre-installed may vary based on different regions.	
<b>Power Supply Compatibility</b>	PSII: ATX12V - Length up to 160mm
<b>Product Dimensions (L x W x H)</b>	390 x 272 x 310mm 15.3 x 10.7 x 12.2"
<b>Package Dimensions (L x W x H)</b>	405 x 300 x 225 mm 15.9 x 11.8 x 8.8"
<b>Net Weight</b>	3.75 kg / 8.26 lbs.
<b>Gross Weight</b>	5 kg / 11 lbs.

\* InWin's products comply with RoHS regulations.

\* Specifications may vary based on different regions.

# Specifications



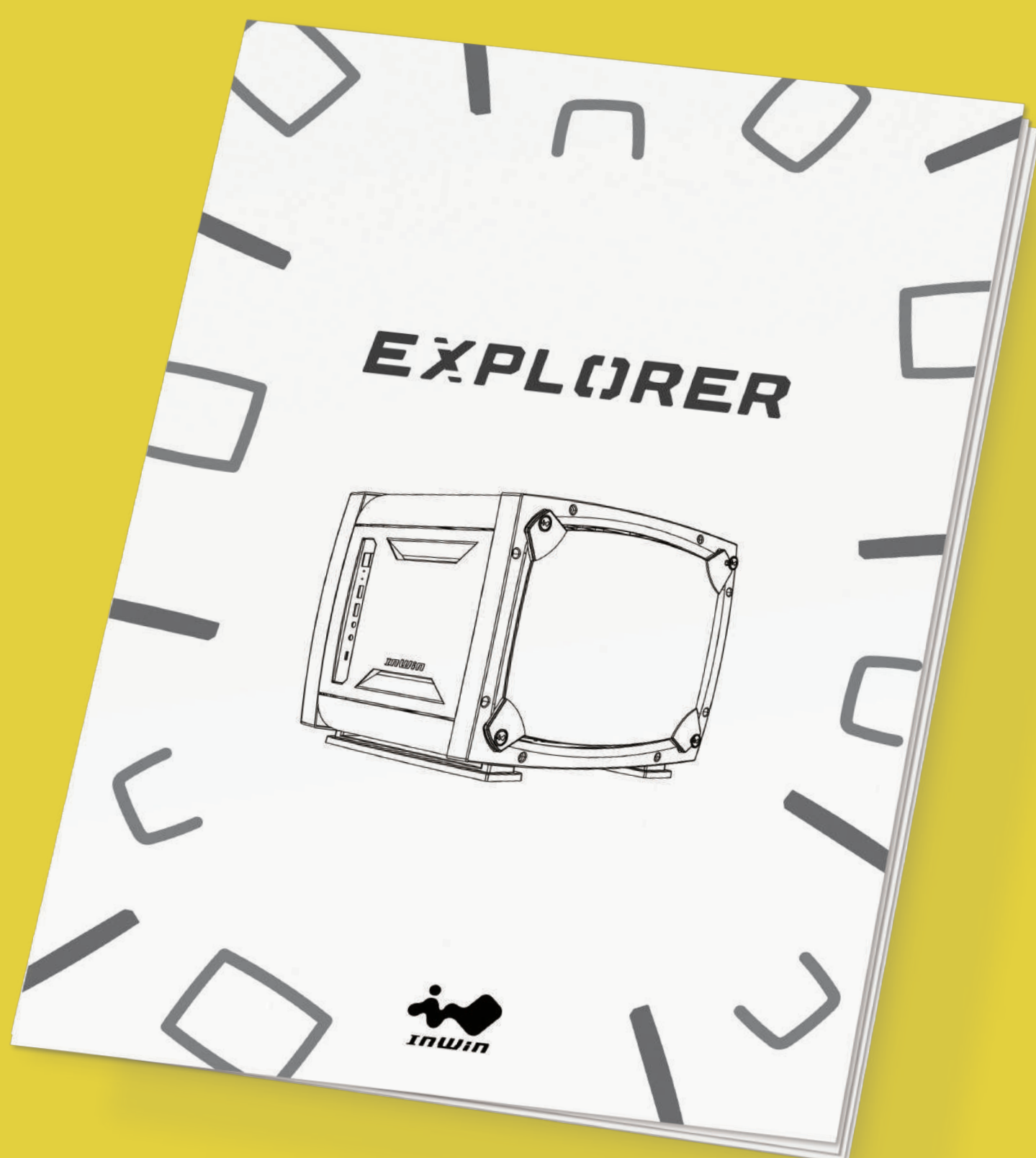
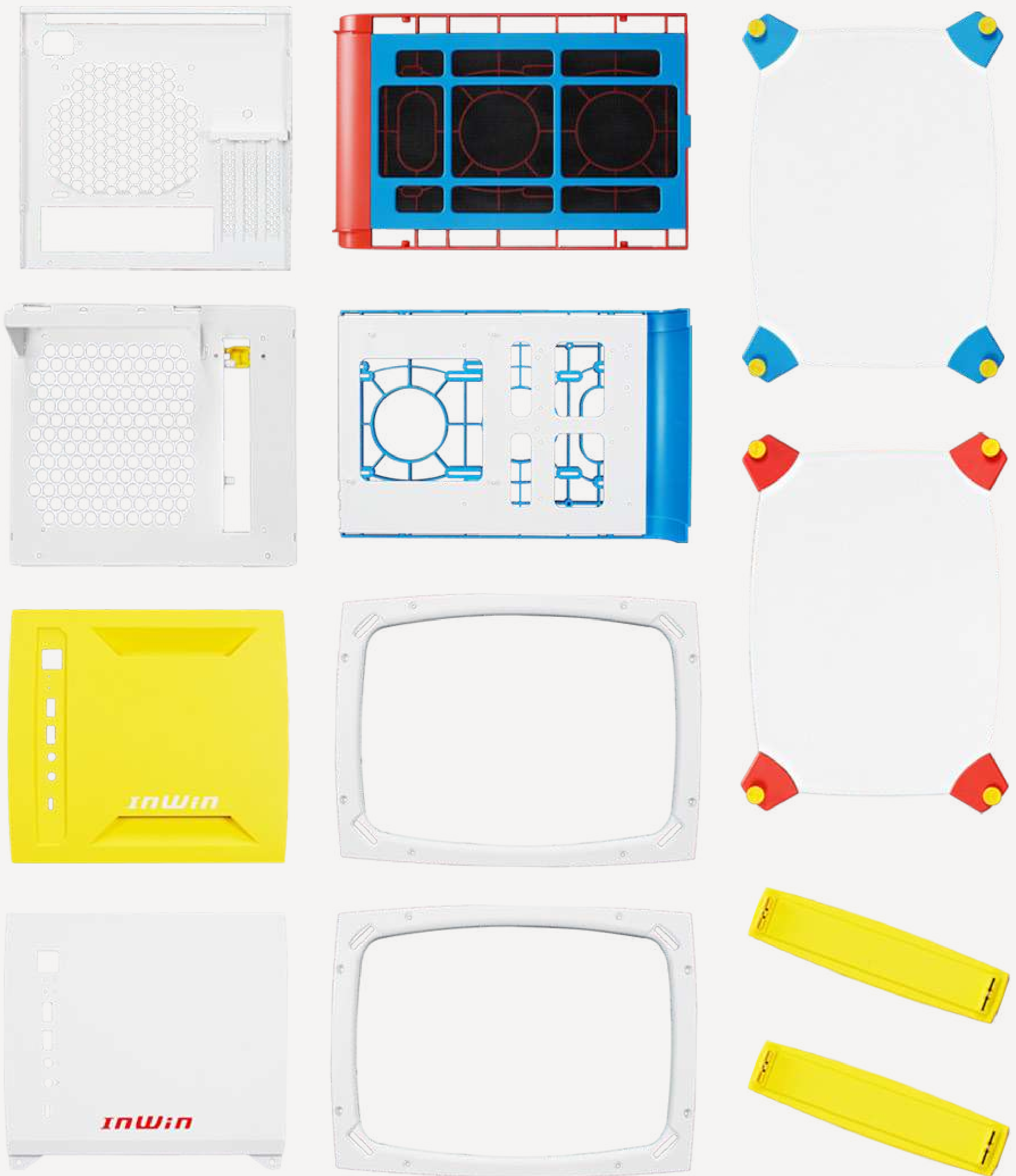
## InWin Luna AL120 Fans

<b>Model</b>	Luna AL120	
<b>Quantity Included</b>	Single Pack	Triple Pack
<b>Model Number</b>	IW-FN-AL120-1PK	IW-FN-AL120-3PK
<b>Colors</b>	Black	
<b>Fan Size</b>	120 x 120 x 25 mm	
<b>Materials</b>	PC, PBT	
<b>Rated Voltage</b>	DC 12V	
<b>Rated Power</b>	3.96W	
<b>Rated Current</b>	0.33A	
<b>ADD RGB Rated Voltage</b>	DC 5V	
<b>ADD RGB Rated Power</b>	1.5W	
<b>ADD RGB Rated Current</b>	0.3A	
<b>Speed Mode</b>	PWM 400-1800 +/-10% RPM	
<b>Air Flow</b>	82.96 CFM	
<b>Air Pressure</b>	2.31 mm / H2O	
<b>LED</b>	Addressable RGB	
<b>Connector (Fan to Fan)</b>	Non-Modular Cables	
<b>Connector to M/B</b>	4-Pin (PWM, 12V), 3-Pin (ARGB, 5V)	
<b>Noise Level</b>	25 dB(A) (Normal)	
<b>Bearing Type</b>	Long Lifespan Sleeve Bearing	
<b>Net Weight</b>	133 g	399 g
<b>Gross Weight</b>	169 g	484 g
<b>Package Dimensions (L x W x H)</b>	185 x 125 x 30mm 7.3 x 4.9 x 1.2"	185 x 125 x 82mm 7.3 x 4.9 x 3.2"
<b>Warranty</b>	2 Years	

\* Specifications may vary based on different regions.

\* Our products comply with RoHS regulations.

# [ Package Content ]



# [ Fans Package Contents ]

x 3



Luna AL120 Fans

x 1



ARGB One-Click Controller

x 12



Fan Screws

# [ Accessories Bag ]



x 30

S-1 Hexagon Head Screws



x 4

S-2 Rubber Stands



x 4

S-2 Screws



x 2

S-3 Power Cord Screws



x 6

3.5" HDD Screws



x 10

2.5" HDD Screws



x 5

Cable Ties



x 1

Power Cord



x 1

Power Supply Holder



# Case Structure



1. I/O Panel

2. Tempered Glass Side Panels

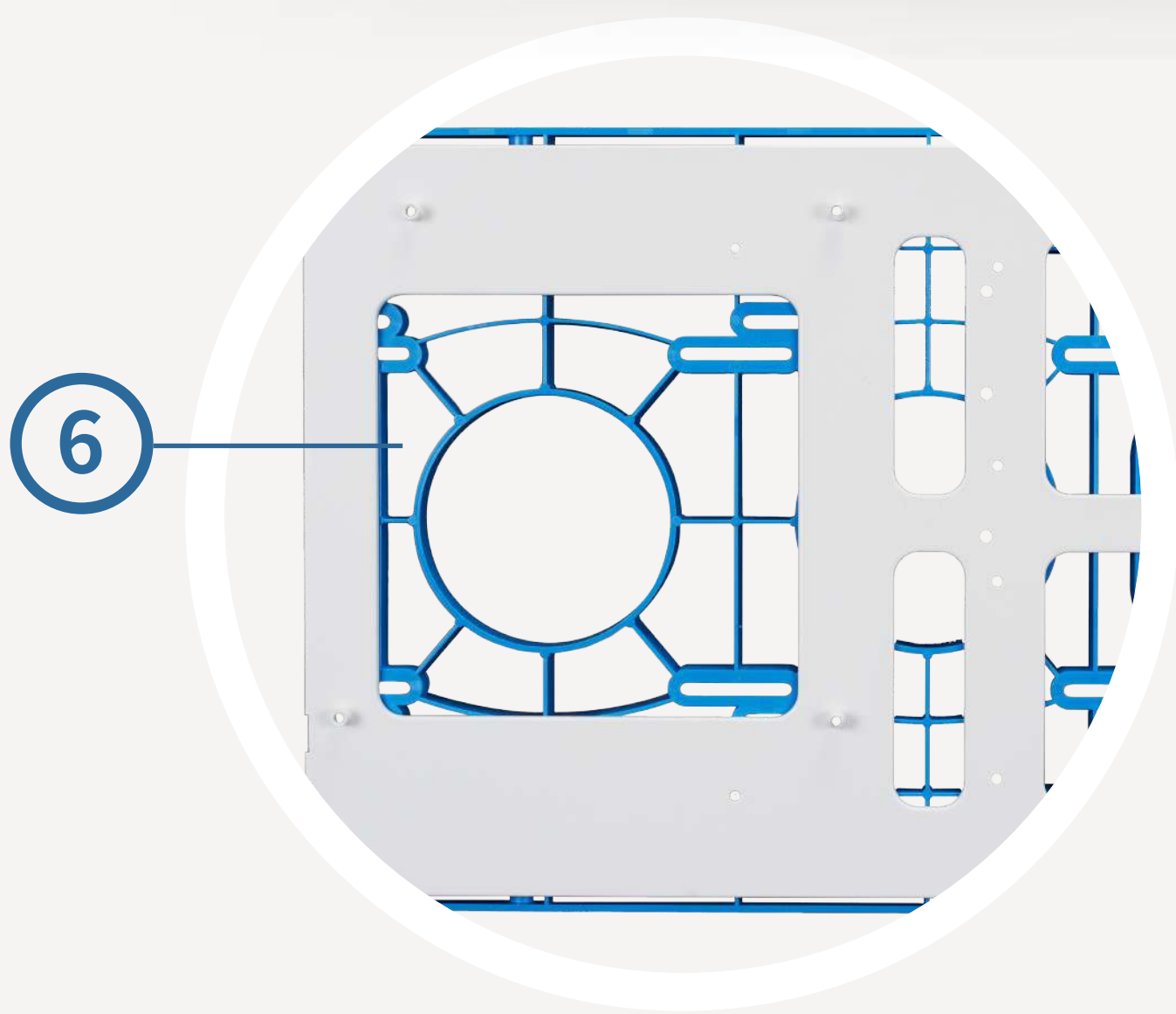
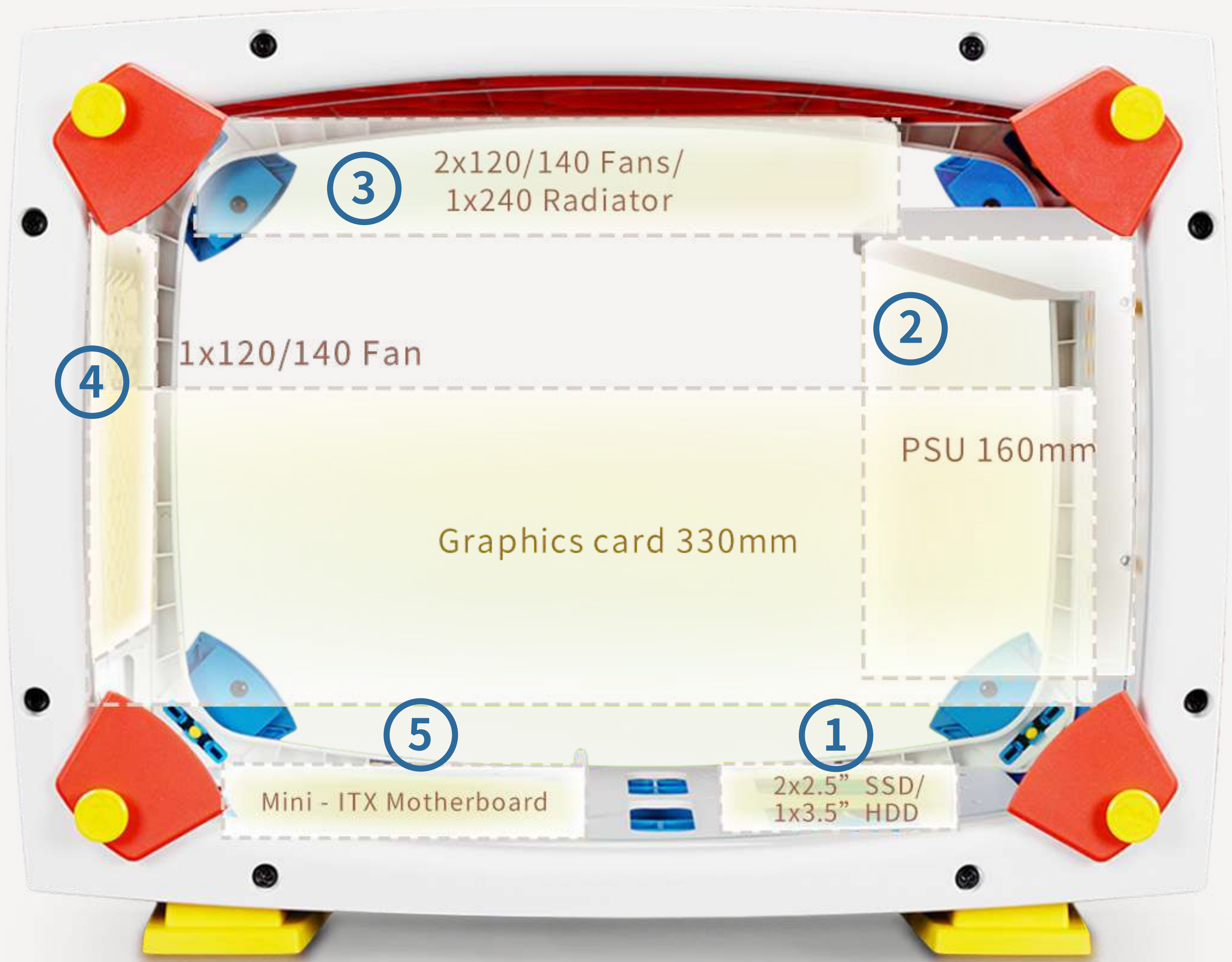
3. Anti-Dust Filter

4. Shock-Proof Stand

5. Swappable SECC Front Panel

6. Swappable ABS Front Panel

# Case Structure



1. 2.5"/3.5" Drive Mounting Area
2. Power Supply Mounting Area
3. Top Fans/Radiator Mounting Area
4. Rear Fan Mounting Area
5. Motherboard Mounting Area
6. CPU Cooler Installation Cut-Out Hole
7. PCI-E Expansion Slots

# Installation Guide

- \* Please follow the related chapters to assemble.
- \* Please only use original provided accessories to avoid damage to the product.

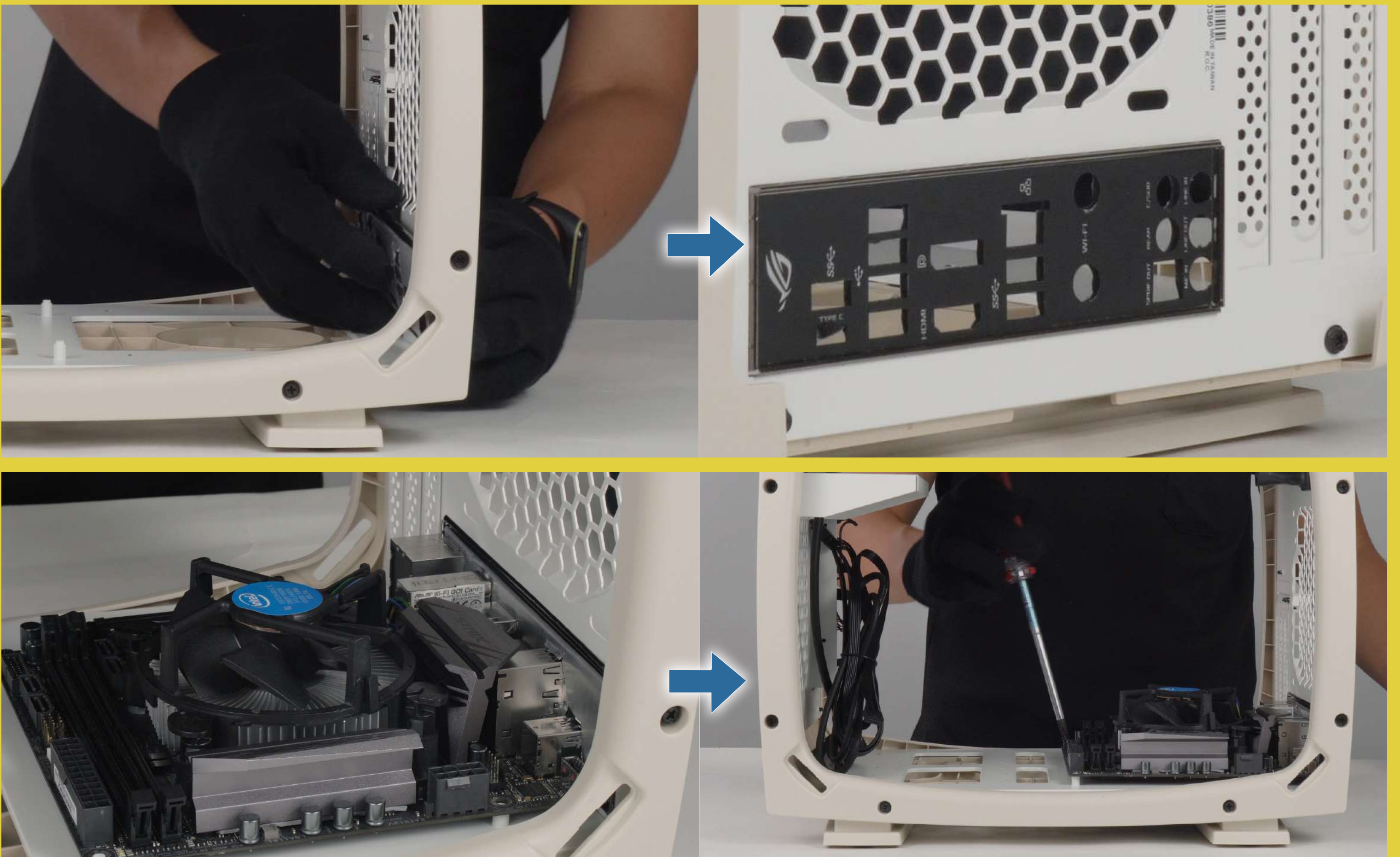
## 1. Opening the Chassis



## 2. Motherboard Installation

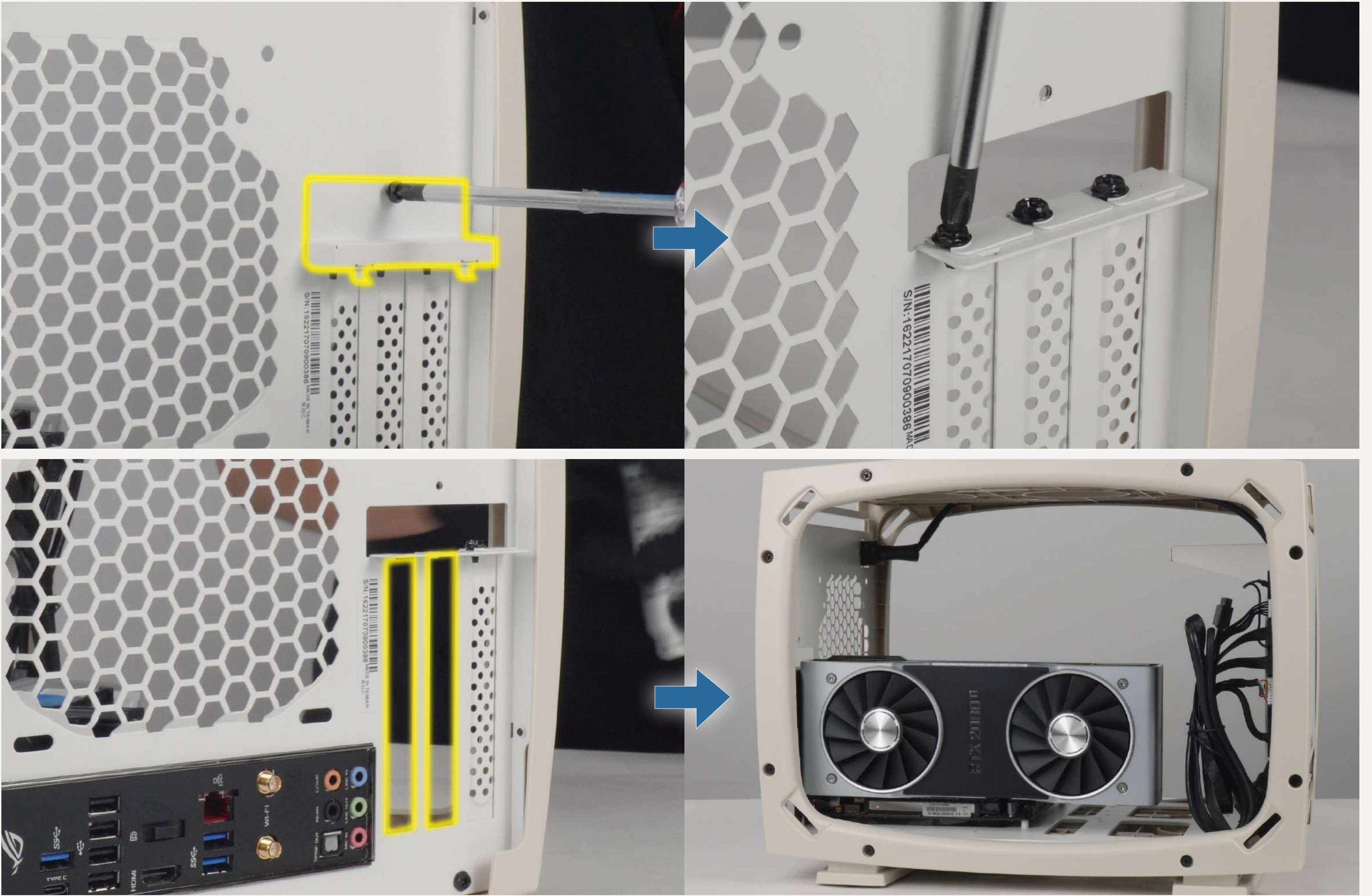


Parts Required: Hexagon Head Screws



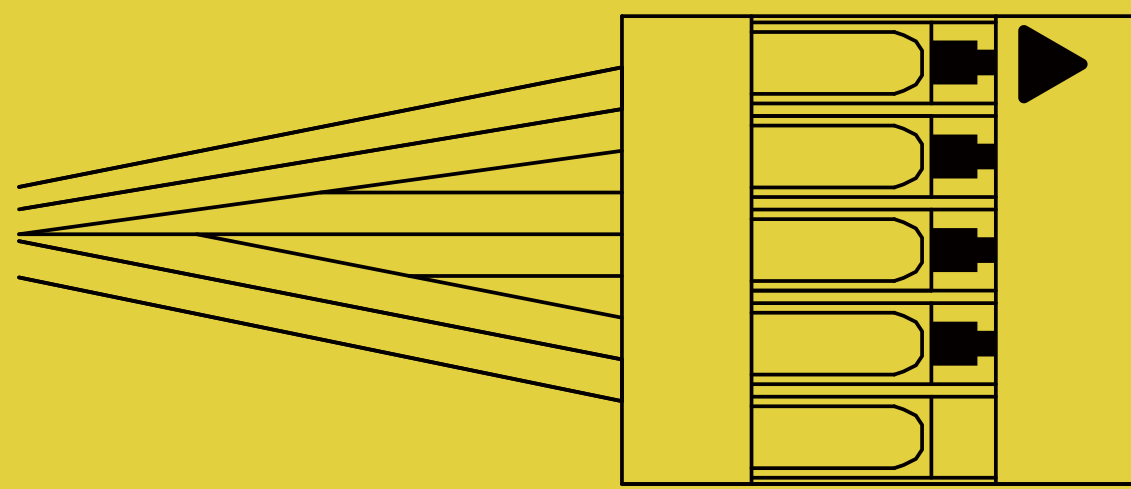
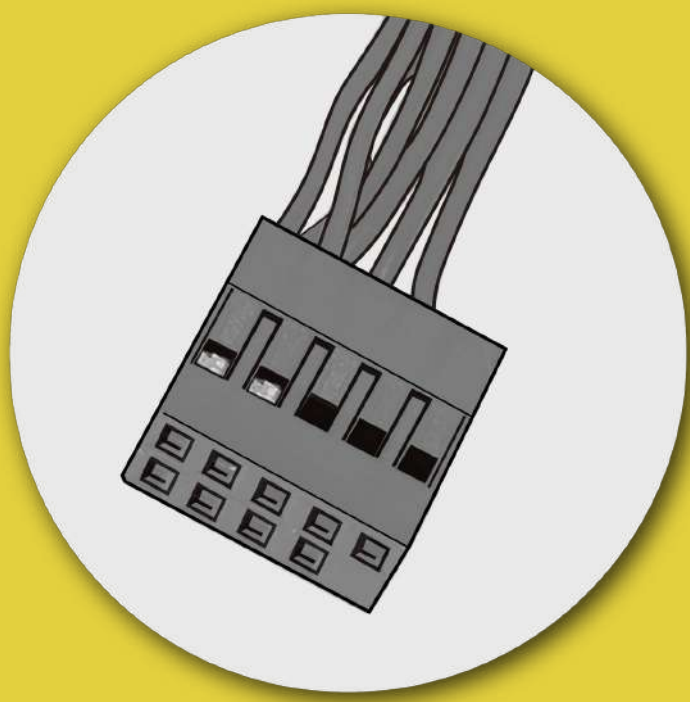
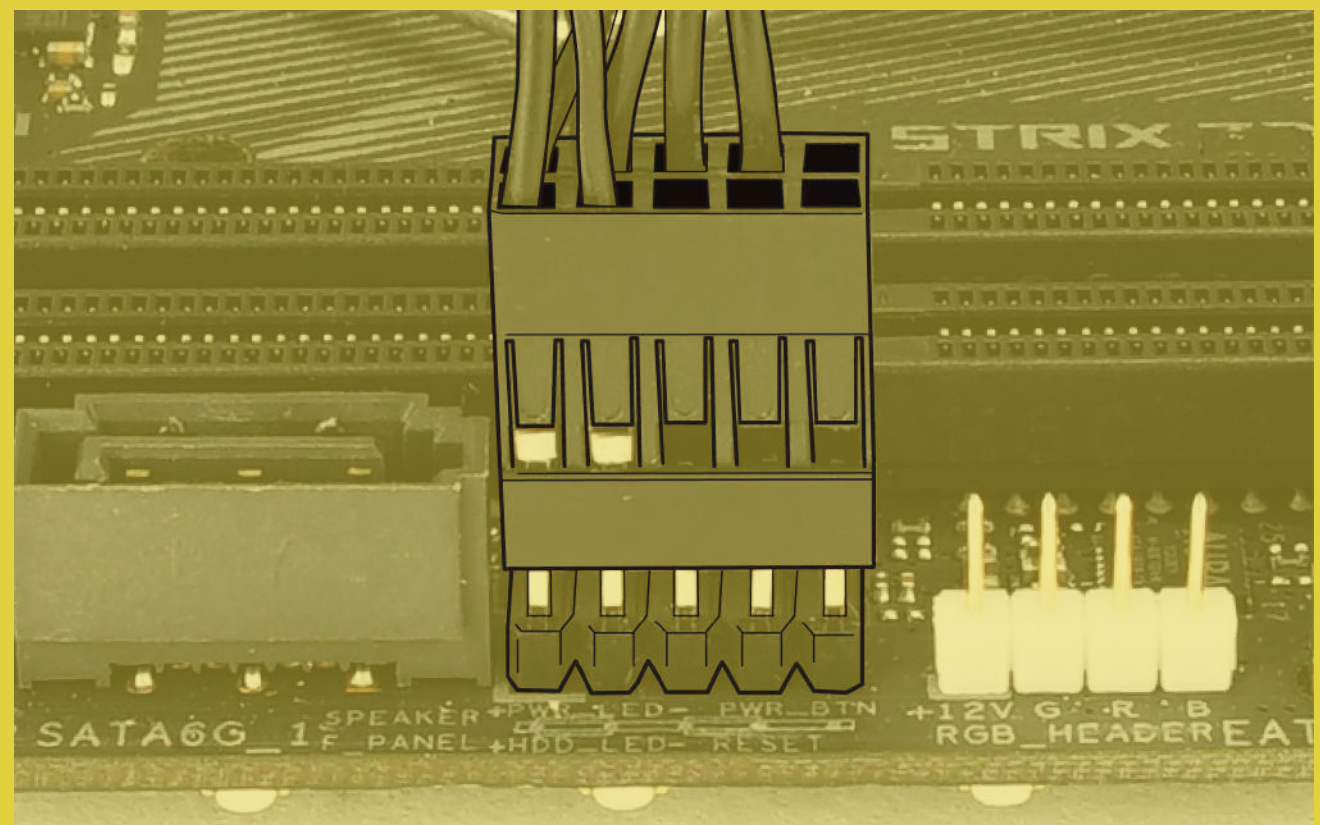
# 3. Expansion Card Installation


 Parts Required: Hexagon Head Screws



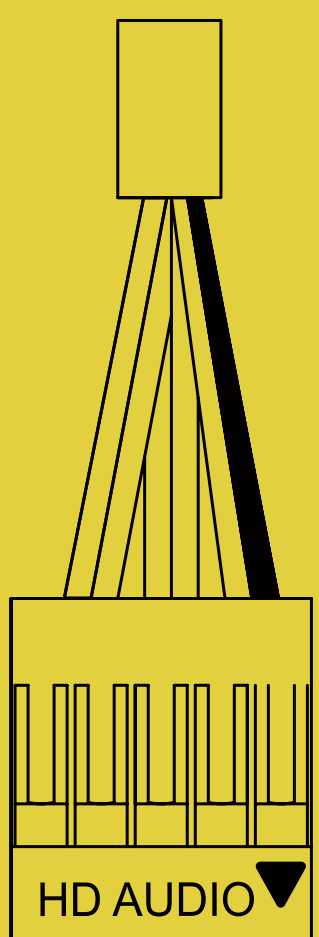
# 4. Connection Cables

I/O Wires



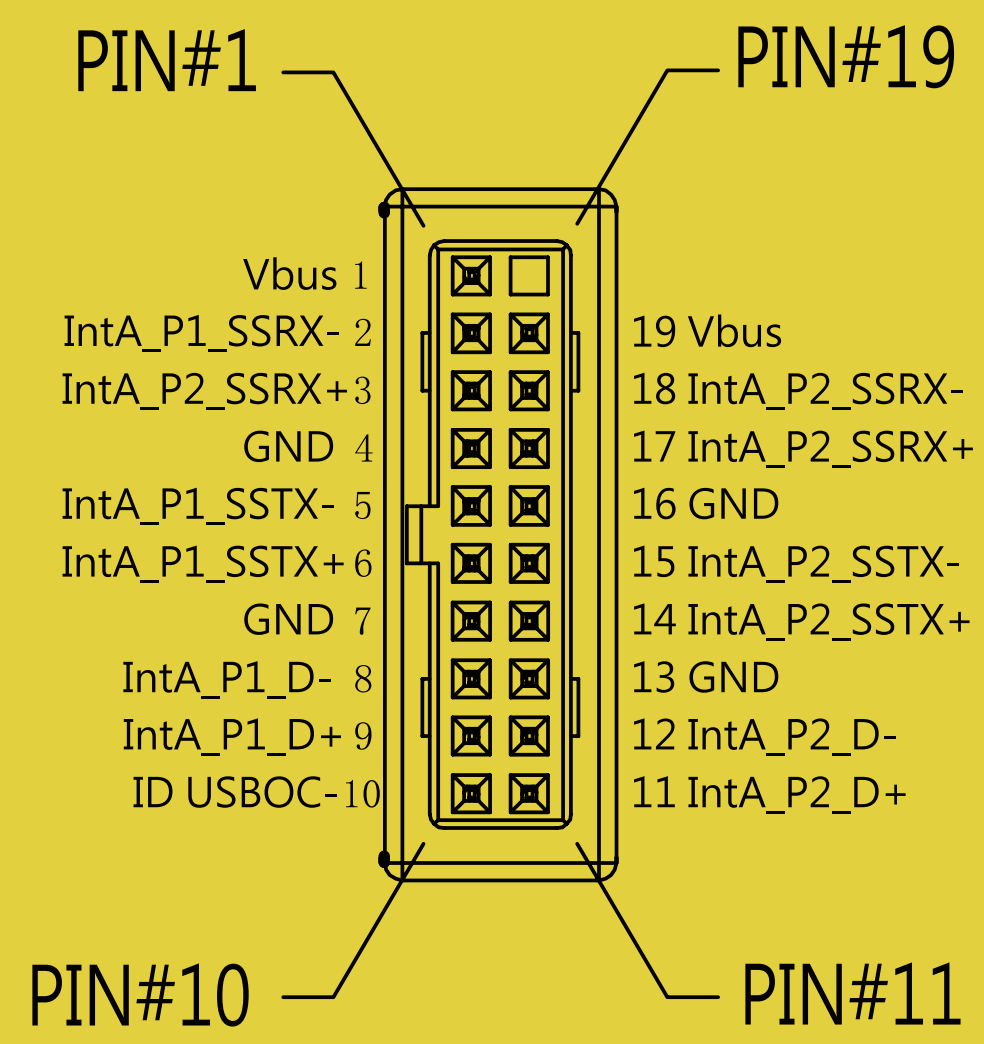
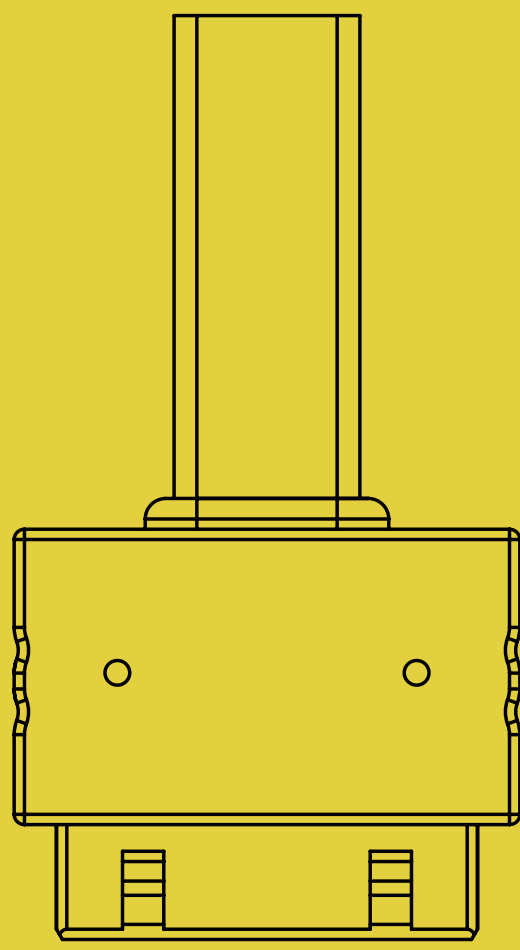
Black(P_LED) 1		2 Black (HDD)
Black(P_LED) 3		4 Black (HDD)
Black(P_SW) 5		6 NC
Black(P_SW) 7		8 NC
Key 9		10 NC

# HD Audio Header

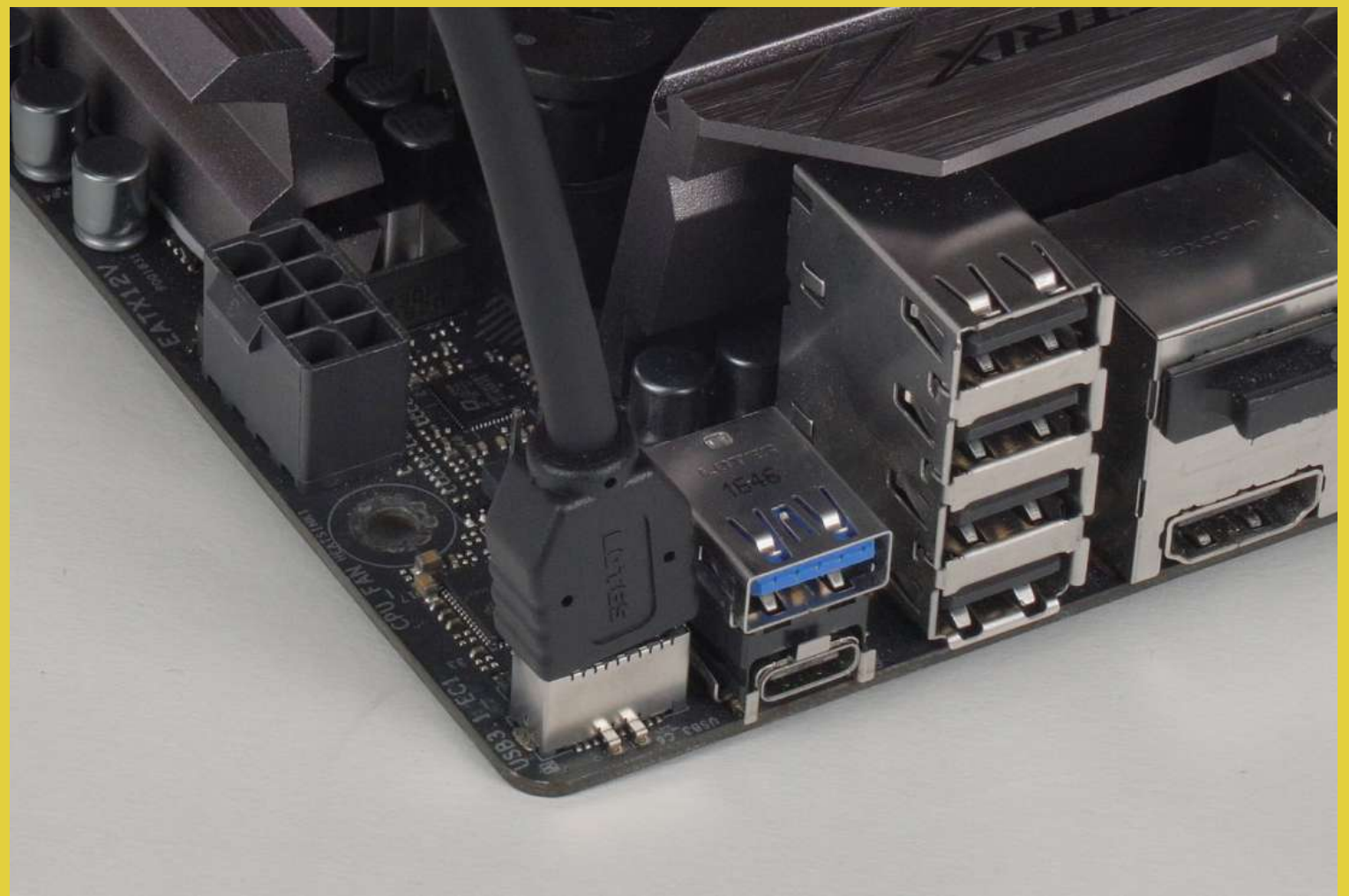
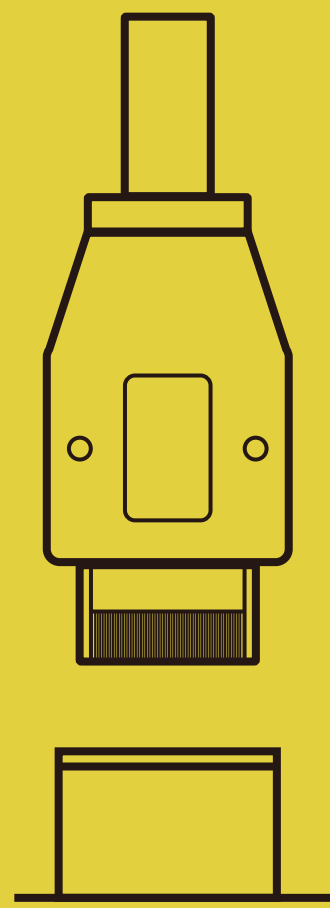


PORT2_L	BLUE	10		9 BROWN	SENSE2_R
SENSE_SEND	PURPLE	8		7	KEY
PORT2_R	YELLOW	6		5 WHITE	SNSE1_R
PORT1_R	RED	4		3 ORANGE	PRESENCE#
PORT1_L	GREEN	2		1 BLACK	GND

## USB 3.0 Header



## USB 3.1 Type-C Header



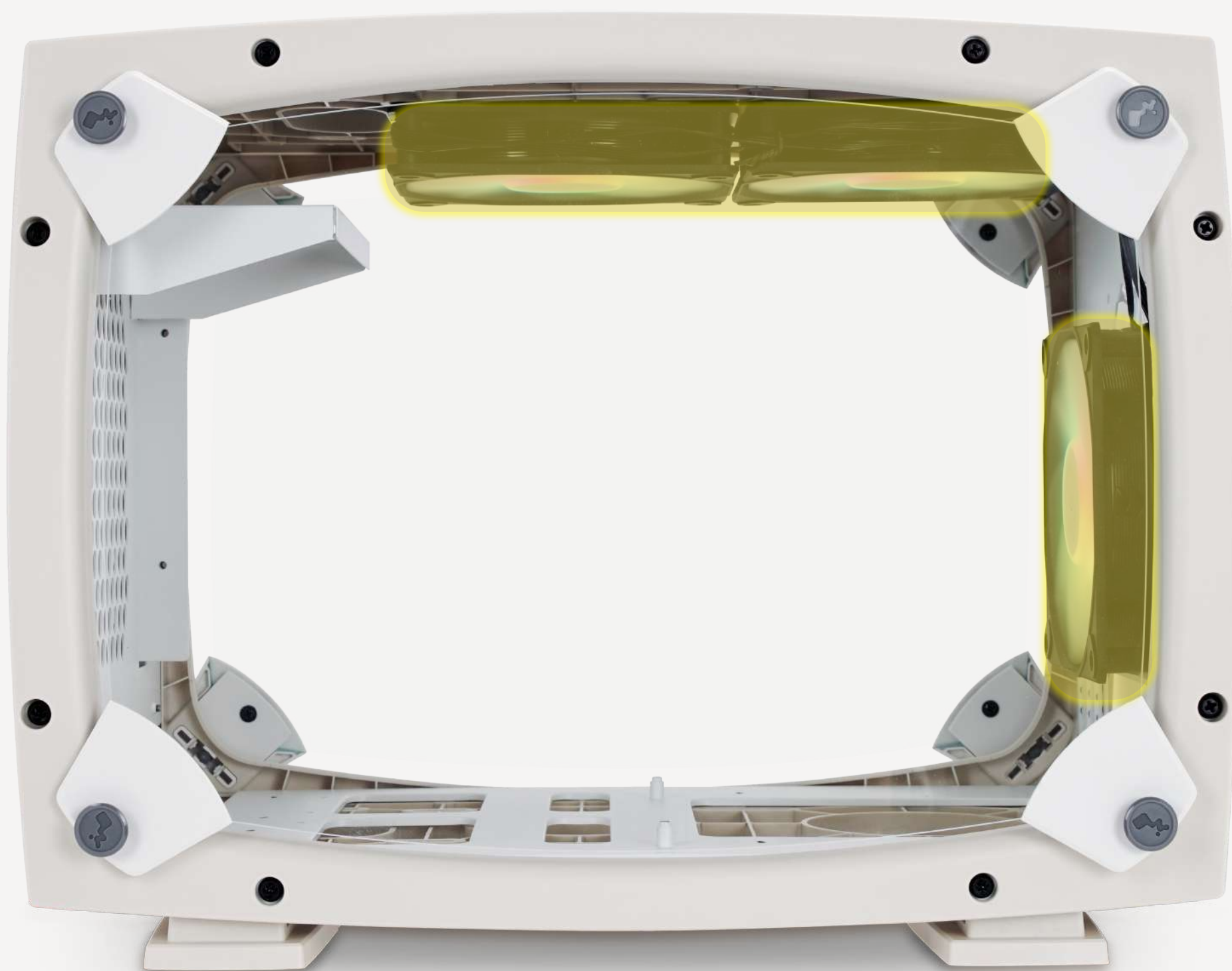
# 5.

## Fan/Liquid Cooling Radiator Installation



Parts Required: Included Luna AL120 Fans

Fan Installation Instructions:  
[https://youtu.be/\\_S\\_LLcqe0KI](https://youtu.be/_S_LLcqe0KI)



## 6. 2.5"/ 3.5" Drive Bays Installation



Parts Required:  
2.5"/ 3.5"  
HDD Screws



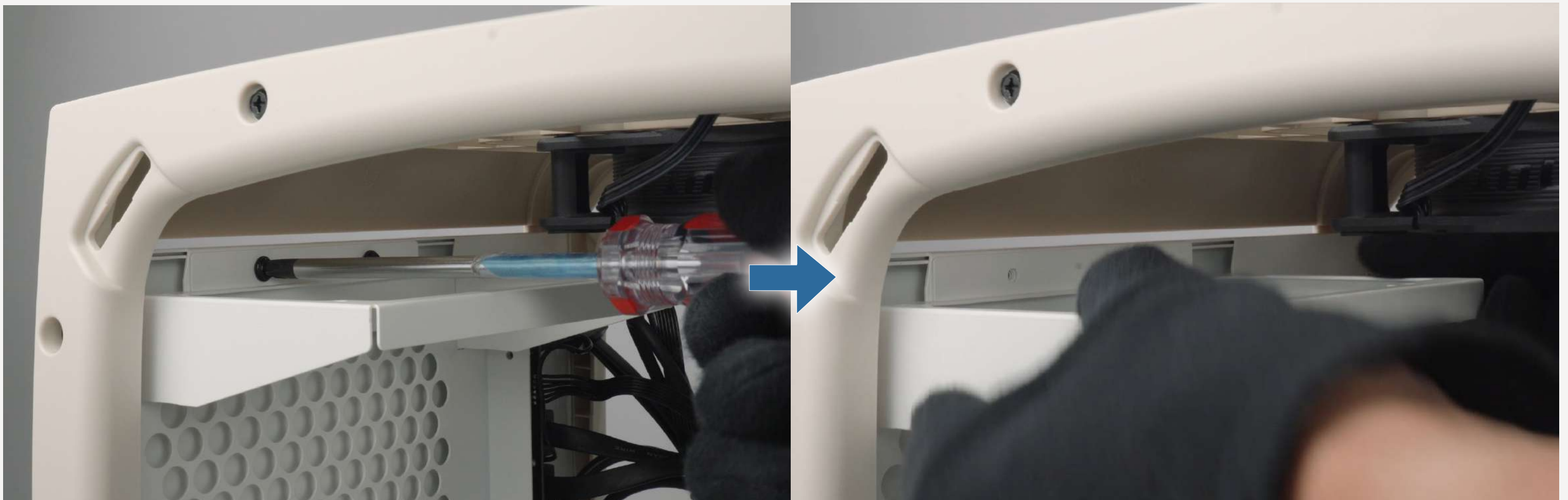
You can choose to either install 2 x 2.5" SSDs or 1 x 3.5" HDD on the selected area.

## 7. Power Supply Installation

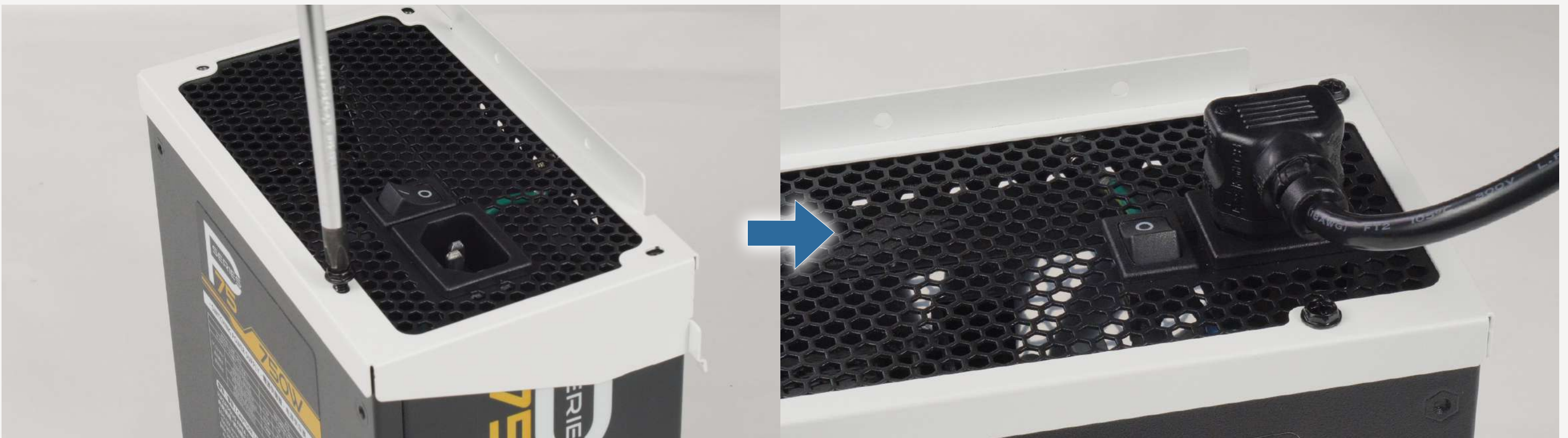


Parts Required: Hexagon  
Head Screws

7.1 Uninstall the Power Supply Holder by unscrewing the two screws.

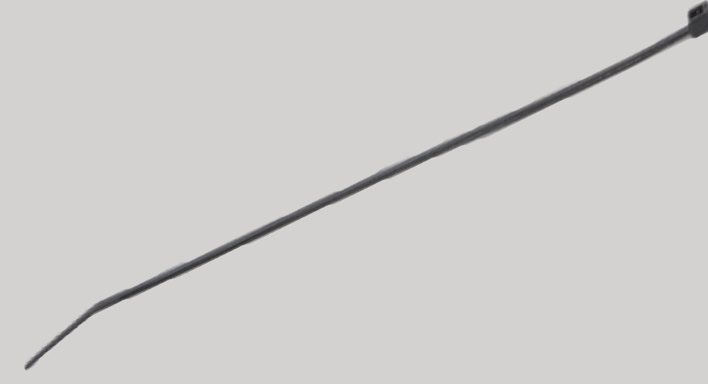


7.2 Screw your power supply to the bracket, connect the power cord to your power supply and install the bracket back to the chassis.



8.

Installation Complete



Parts Required:  
Cable Ties



**EXPLORER**

*Think It. Build It.*

# 〔 Notices and Warranty 〕

## ■ Notices

1. Please follow the user manual for installation guidelines.
2. When installing the computer components, please use antistatic precautions to prevent ESD (electrostatic discharge) damage. Failure to take the necessary precautions may result in injury to the installer and/or damage to the machine. Incorrect installation may burnout the motherboard and other system components.
3. To avoid any damages, please do not use this product for any other purpose than its intended use.
4. Any modifications may damage the product.
5. Please remove all internal devices before shipping or moving. (Including power supply, hard drives, motherboard, CPU, etc.)
6. When storing the case, please keep this product away from high temperatures. Keep away from machines such as heaters that might cause high temperatures.

## ■ Warranty

- \* For more detailed warranty information, please visit the InWin retail website at [www.in-win.com](http://www.in-win.com).
- \* The actual product is subject to change without prior notice. In Win Development Inc. reserves the right to make final modifications.





CONTEMPORARY & INNOVATIVE  
www.in-win.com

